



Brazos County Livestock Newsletter

December 2016 Edition

Inside this issue:

| | |
|------------------------|----|
| Validation Dates | 2 |
| BCYLS Heifer Entries | 2 |
| BCYLS Scholarship | 2 |
| What to feed your pig | 3 |
| How to setup your calf | 5 |
| Southern Classic | 6 |
| VFD information | 7 |
| Major Show Updates | 9 |
| Major Show Judges | 10 |
| Major Show Dates | 11 |
| Contacts | 11 |

Special points of interest:

- Validation Dates
- Southern Classic
- Feeding show pigs
- VFD
- BCYLS Scholarship
- BCYLS Heifer entries
- How to setup your calf
- Major Show Updates
- Major Show Judges
- Quality Counts

County Swine Validations

- BCYLS only Swine Validation– December 12th @ the Brazos Expo Complex from 5:30-7PM

If you have an issue with the date of validation, please contact us at the Extension office prior to validation.

BCYLS Rabbit Date Information:

Breed Date – December 27, 2016

Kindle Date – January 26, 2016

Validation – February 27 from 5-6 PM at the Brazos County Expo (note the NEW location)

Major Show Pass Handout & Travel Meetings

- ♦ Ft Worth– January 16th at the Brazos County Extension office starting at 6PM
- ♦ San Antonio – February 8th at the Brazos County Extension office starting at 6PM
- ♦ Star of Texas & Houston– March 7th at the Brazos County Extension office starting at 6PM– We will be drawing for parking passes at this meeting, do not have to be present to receive a pass.

If you are unable to attend the meeting please contact us prior to the meeting so we can include you in the travel plans and get your passes prior to the show

Brazos County Validation Dates & Tag Orders

Swine

BCYLS– December 12th at the Brazos Expo Center from 5:30-7:30PM (Tag Orders due September 23)

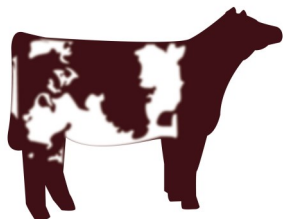
BCYLS FCS– January 17th at College Station High School

BCYLS Rabbit– February 27th at the Brazos Expo Center

Poultry

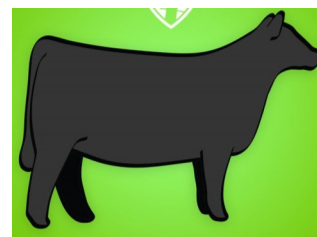
Chicken Pickup– TBA

BCYLS Heifer Entries



All Heifers wanting to show at the Brazos County Youth Livestock show must enter by February 3rd. Entries will be made with Larry White at Rudder FFA

Entry Forms can be found at this link: <http://bcyla.net/>



BCYLS Scholarship

It is that time of year again for all the Seniors to begin thinking about starting on their scholarship applications. The BCYLS scholarship is awarded to qualifying senior FFA & 4-H members who complete the application and meet the requirements.

The applications are due to the Brazos County Extension office by February 13th

Applications can be found in the BCYLS Rulebook at this link: <http://bcyla.net/>

Livestock Project Site Visits

As the year goes on I will be doing my best to make my rounds and visit each and everyone's projects for this year. I am planning on making project visits on Friday afternoons to various parts of the county each week in order to try and make it by everyone's house at least once every 2-3 months. If you are new to the program or would like for me to come by and check on your project you will need to contact me sometime over the next few months and schedule a visit so I can come by and visit with you about the upcoming show year. You can reach me at 979-823-0129 or via email at Jerod.Meurer@ag.tamu.edu and we can set up a time for me to come out and visit about your projects



How Much Should I Feed My Pig?

by Josh Brockman, Show Products Marketing & Growth Coordinator

How much should I feed my pig?

One of the most frequent questions I'm asked from new feeders, and even a lot of experienced feeders is, "How much should my pig be eating?" And for good reason. The two most important parts of your pigs' nutrition is the proper type and amount of feed and **a fresh, clean water source**. Knowing how to use supplements for added fat, muscle, body, joint protection, etc. are all very valuable tools, however making sure your pig has a healthy digestive system and is consuming their basic feed ration and daily water intake will get you a long way down the road to success.

Feeding Process and Routine

First off, let's talk about the setup and routine you should have for feeding your pig. From day one, I feel it's best suited to "hand feed" versus using a self feeder. This allows you lots of advantages: 1. You can monitor the amount of feed your pig is eating and know exactly the amount they are consuming; 2. Your pig will actually receive more total nutrients out of eating in one setting (approx. 10-20 min) versus eating small portions throughout the entire day, like they traditionally do on a self feeder; 3.) In the end, we need show barrows/gilts to consume the amount of feed we desire at a show when we want them to, so doing this process at home only helps train them to eat when feed is put in the feeder. In essence, it becomes a habit for them, and natural.

I recommend feeding twice a day, once in the morning, and once in the evening, and as close to 12 hours apart as you can get. For example, an ideal time would be 7 a.m. and 7 p.m. each day. Another very important part of this is to remember, your training your pig for a schedule, and just like you get hungry around lunch time, they will begin to be hungry at each feeding time, so it's very imperative to feed close to the same time everyday.

What is the right amount of feed to start my pig on?

The right amount of total feed to provide will change throughout the season and is dependent on factors such as appetite, size, and the physical traits and weight you're targeting. You normally are receiving pigs at approximately 6-8 weeks of age, so a big portion of questions I get are "How much feed do I need to start them on?" In this stage of their life, pigs are maturing and growing in many areas much as a young child, so at this point I want them consuming basically all they want to eat, as if they were on a self feeder, however being trained to eat in two settings. This way I can also monitor how they are eating and the amount they are consuming daily.



I always start pigs out on 1 lb. of feed per feeding for about the first 3-5 days you have them in the barn. I always do a minimum of three days because that also gives them time to adjust to a new environment, have relief from the stress of travel and give you a true evaluation of their appetite. *(I also suggest using **Vita Charge paste** or **Vita Charge Liquid Boost** for those first three days to aide with the stress of this transition).*

After they have settled in...

As we discussed earlier, digestive health, general feed and fresh water are the most important factors to me when feeding. After 5-7 days in the barn is when I begin to introduce **Sure Champ** or **Sure Champ Spark** to assist in gut health and aide in consumption and digestion. If your animal's digestive system isn't functioning properly they won't be able to fully utilize their ration or supplements, and you run the risk of sickness because of lower immunity.

At this point in the feeding phrase I also begin adjust the feed amount ¼ lb +/- according to how they are eating. So if they are cleaning up their feed and hungry at feeding time then you would increase. If they are leaving feed you would decrease. Remember we want them eating all they want, but also cleaning it up each feeding. I then repeat this process every 3-5 days over the next few weeks. If you increase, but they don't clean it all up go back to the amount you were at previously, and go another 3-5 days before trying to increase again. I'll use this process generally until I get to 1.5- 2 lbs. of total feed per feeding. *(Note that this is general outline on feed AMOUNTS. The type of feed you feed during this period may still need to be adjusted based on your pigs needs).*

What's next for the growing period?

From this point your amount adjustments are dependent on many factors and when you need to begin targeting a feed plan based on your pigs type, muscle, body condition, weight, and the direction you need to focus on in these areas. Some pigs need to be continued on increases up to 2.5-3 lbs. per feeding to continue to meet their maturity needs, where others need to maintain or "coast", and some need to be managed at this point for weight/skeletal reasons. At this point I alter my adjustment time from 3-5 days to weekly. Remember when you change feed, that you won't see a difference in just a day or two, so give them ample time to respond to a feed change before you decide you need to change again.





In order for your calf to catch the judge's attention you need to know how to properly set up your calf in the show ring. It will take lots of time and practice to get your calf used to you moving its feet, but you can get started as soon as your calf is used to the show stick.

It is important that you use a combination of pressure on the halter and your show stick to move your calf's feet into the proper position. Britney Creamer, Sure Champ Show Cattle Expert provides four simple steps to get your calf looking its best in the show ring.

The first step is making sure you choose the right size of show stick for your height and the size of the calf. Don't be afraid to carry a big show stick, especially if you are a younger or shorter showman. A longer show stick will allow you to reach the hind feet easier. We recommend a large or extra large show stick.

Ultimately, it should be your goal to use your stock show the least amount possible. The best showman are able to walk their calf into place without setting the feet with the show stick. Slow your pace as you are about to stop with you calf. Once you have them stopped into position, scratch your calf on the belly or brisket before you move any feet. To pull a foot forward apply pressure on the halter in a forward motion, and use the hook of the stick below the calf's declaw. To push a foot back, apply pressure backwards with your halter, and use the point of the stick about an inch about where the hoof splits to push the foot back. By using halter pressure it will encourage your calf to work with you instead of against you.

You can also use some good footwork of your own. You can place your foot in front of your calves foot and use it as a road block when pulling a front foot forward. After your calf is well broke you will also be able to use your foot to push a front foot or backwards.

Being able to move feet is the key to making sure your calf has the most appeal possible in the show ring.





TEXAS A&M
AGRI LIFE
EXTENSION

**BEEF, LAMB,
GOAT, SWINE &
RABBIT CLINIC
AND PROSPECT
SHOW**

**December 9-11, 2016 @
Brazos County Expo Center**
5827 Leonard Rd. Bryan, TX. 77807

What is the Southern Classic?

The Southern Classic Youth Livestock Project Experience & Prospect Shows are intended to provide an educational opportunity for new families participating in the livestock project area. The main purpose is to teach the basic principles of livestock management as they relate to facility maintenance, selection, nutrition, animal health, handling, and showmanship.

"Quality Counts" programs are discussed to ensure that safe and legal use of drugs or medications to facilitate the ethical care, development, and exhibition of livestock

Early registration is \$30 by November 22nd

Late registration is \$40 from November 23rd –December 11th

Onsite Registration is \$40

Register at: <http://counties.agrilife.org/walker/southern-classic-registration/>

Friday, December 9th

Barns Open & Check-in - 4-7pm

Saturday, December 10th

7:00am- Barns Open & Check-in

9:30 am- General Session Starts

10:30-Individual Species Sessions Start

12:00- Catered Lunch

1:00pm- All weight cards due

1:15- Afternoon Species Sessions Start
(one set of clippers will be given away at the conclusion of each species session. Must be present to win!)

4:00pm- Adjourn

**<NO ELECTRICITY AVAILABLE>
SATURDAY 10:45 am - 4:00 pm**

Sunday December 11th

9:00am-Beef Prospect show
(heifers and steers will show at the same time)

9:00am-Lamb Prospect Show

9:00am-Goat Prospect Show

9:00am-Swine Prospect Show

OPEN TO ALL YOUTH IN GRADES 3-12

NO PEEWEE EXHIBITORS

NO OUTSIDE SHAVINGS

For More Information:

Contact your local County Extension office, the Brazos County Extension office at 979-823-0129 or visit us online at <http://d94-h.tamu.edu/eventsandcontests/southern-classic/>



The members of Texas A&M AgriLife will provide equal opportunities in programs and activities, education, and employment to all persons regardless of race, color, sex, religion, national origin, age, disability, genetic information, veteran status, sexual orientation or gender identity and will strive to achieve full and equal employment opportunity throughout Texas A&M AgriLife.

Veterinary Feed Directive (VFD) for Youth Livestock Exhibitors

Joe W. Mask, PhD.
Assistant Professor & Extension Specialist
Youth Veterinary Science



How does FDA Classify Drugs?



- There are 3 categories of Veterinary drugs regulated by FDA:
- Over-the-counter (OTC)
- Prescription (Rx)
- Veterinary Feed Directive (VFD)

VFD Time Line (Final Rule)



January 1, 2017

*Most antibiotics intended for use in **feed** that are currently available “over-the-counter” will become VFD drugs.*

VFD Focus



Current focus is on antibiotics delivered in **feeds and water**.

For example:

Lincomycin-(swine feed)

Tetracycline-(poultry water)

Veterinarian-Livestock Exhibitor-Patient Relationship (VCPR)



For a VFD order to be written by a Veterinarian, the Livestock Exhibitor must establish a working relationship with his or her Veterinarian similar to what one would have with their family doctor. This relationship is referred to as a Veterinary Client Patient Relationship (VCPR)

When should Livestock Exhibitors begin the VCPR?



Prior to getting their youth livestock project

What are the changes to the VFD rule?



Transitions most antibiotics found in the feed that are currently available “over-the-counter” (OTC) into the VFD drug category.

What are VFD Drugs?



- VFD drugs are FDA-approved for use in animal feeds under veterinarian supervision and under written VFD orders.
- Antibiotics delivered in feeds that have been deemed by FDA to be medically-important to human medicine.
- A label for the feed must state if the additive is a VFD drug or not.

Livestock Exhibitors need written authorization from a licensed veterinarian whom they have an established relationship (VCPR)

As a Livestock Exhibitor can I feed a VFD feed past the VFD expiration date?

No. A VFD feed or combination VFD feed must not be fed to animals after the expiration date on the VFD.

My VFD order is set to expire before I can complete the duration of use on the order, what should I do?

A VFD feed must not be fed to animals after the expiration date on the VFD. You should contact your veterinarian to request a new VFD order.

Medicated feed can ONLY be fed as per the label.

Steps to obtain a VFD order

- (1). Contact your veterinarian with whom you have a working relationship (VCPR). If a Livestock Exhibitor does not have a VCPR with an veterinarian, then the preliminary step is to establish that relationship.
- (2). In consultation the veterinarian and livestock exhibitor determined whether conditions warrant use of a VFD drug.
- (3). If warranted, the veterinarian issues a written and signed VFD order containing information specified by regulations. Verbal orders are not allowed but electronic orders are acceptable. Incomplete and unsigned orders are invalid and cannot be filled.

Once a VFD order is written

The veterinarian retains the original VFD order and gives the completed copies to the Livestock Exhibitor.

The Livestock Exhibitor keeps a copy and gives a copy of the VFD to the feed mill or feed distributor supplying the VFD feed.

The VFD order allows the feed to be released to the Livestock Exhibitor.

The VFD must be retained for 2 years.

Basic Livestock Exhibitor Responsibilities

- ◉ Contact your veterinarian for consultation and guidance.
- ◉ Establish a **VCPR** with your veterinarian.
- ◉ Follow your veterinarian's recommendations.
- ◉ Administer the VFD medicated feed according to the directions on the VFD order.

Basic Livestock Exhibitor Responsibilities

- ◉ Keep copies of your VFD orders for at **least two years**.
- ◉ Keep Accurate Records (not to just have records but to have records that focus on what is necessary)

Major Livestock Show Rule Updates

Ft. Worth Livestock Show

- No cable halters will be allowed
- Gate passes will be barcoded this year
- An animal will be disqualified if it is not being trimmed, fitted, or dressed by anyone other than exhibitors, County Agent, Ag teacher, or other feeders or leaders within the county or school district from which the animal is entered.
- Goats will not be officially weighed this year, all cards must be turned in and there will be a 4lb weigh back
- All goats must be shorn to the skin with a uniform clip
- Heifer Show order– Sat 1/21– (AM)- Maine, Brangus, Shorthorn (PM)- Beefmaster, Polled Hereford, Hereford, Charolais
Sun 1/22- (AM)- Gert, Red Angus (PM)- Limi, Angus Mon. 1/23- (AM)- Brahman, Simi (PM)- ORB, Simbrah

San Antonio

- Breeding sheep will include– Dorper, White Dorper, Hamp, Rambouillet, Southdown, Suffolk
- ORB heifers can now include a % Chianina heifers
- Steer show order– Wed. 2/22– Simi, Limi, Maine, Shorthorn, Red Angus, Hereford, Angus. Thur. 2/23– Char. Simbrah, Gert, Brangus, Brahman, ABC, Red Cross. Friday 2/24– Black Cross, Other Cross
- New trailer staging prior to entering lot to unload at barns. You will now stage at the trailer lot off I35 not on Gembler Rd.

San Angelo

- All barrows must be Texas Bred and have valid CTBR certificate
- All lambs must have TLBA tags
- Sheep show will be 2 day format– Sunday– Finewool, Finewool Cross, & Dorpers. Monday– Southdown & Medium wool.
- Sheep have tooth rule: No more than yearling teeth will be allowed, they will be checked on show day
- Breeding Gilts must be State Validated.
- TX. Star wether dams hair may not exceed 1.25 inches above the hock and knees
- There will be a TX. Star wether dam show– Non-pedigreed wether type lambs; breed divisions include: FW, FWX, SD, MW, & Dorper. No more than yearling teeth, Must Have pink TLBA tag on validation paperwork, all slick shorn

2016-2017 Major Show Judges

Odessa

- Steers– Brady Ragland & John Decleerck
- Heifers– TBA
- Lambs– Robert Scott
- Goats– Taylor Osbourn

Ft. Worth Livestock Show

- Steers– Doug Husfeld
- Heifers–
 - Kyle Perez– Charolais, Red Angus, ORB
 - Kevin Jenson– Beefmaster, Brahman, Brangus, Limousin, Maine, Gert, Simbrah
 - Gerald Young– Angus, Hereford, Polled Hereford, Shorthorn, Simmental
- Sheep– Todd Wise
- Goats– Andy Laughlin
- Swine– Kane Causemaker

San Antonio Livestock show

- Steers– Kevin Jenson
- Heifers–
 - Wes Hudson– Angus, Brahman, Beefmaster, Charolais, Maine, Gert.
 - Mike McGuire– Brangus, Hereford, ORB, Red Brangus, Simmental
 - Cody Sankey– ARB, Chianina, Limousin, Red Angus, Shorthorn, Simbrah
- Sheep– Kelly Bruins
- Goats– Brandon Callis
- Swine– Biran Anderson, Garry Childs
- Turkey– Keith Scott
- Broilers– James Woitaske

San Angelo Livestock Show

- Steers–Mark Hoge
- Heifers–Mark McClintock &
- Sheep– Mark Hoge
- Goats– Jamie Osbourn
- Swine–

Star of Texas Livestock Show

- Steers– Jack Ward
- American Heifers– Chris Cassady
- British/Continental Heifers– Tyler Cates
- Sheep– Chad Coburn
- Goats– Kevin Newsom
- Swine– Miles Toenyes

Houston Livestock Show

- Steers– Shane Bedwell
- Heifers– Tim Fitzgerald, Mark Core, Jary Douglas
- Sheep– Kyle Smith
- Goats– Bryan Bernhard
- Swine– Dan Hoge, Mark Hoge
- Broiler Pullets– Dennis Ellebracht
- Broiler Cockerels–Jacob Coppedge
- Turkey– Mark Vader

BCYLS

- Steers– Rusty Turner
- Heifers– Joe Mask
- Sheep– Josh Blanik
- Goats– Josh Blanik
- Swine– AJ Lewis

**Brazos County
Extension Office**

2619 Highway 21 West
Bryan, Texas 77803

Phone: 979-823-0129
Fax: 979-775-3768

E-mail:
Brazos@ag.tamu.edu

Wer'e on the Web!

<http://brazos.agrilife.org/>

Upcoming Events:

Validations:

BCYLS Swine-12/12

Show Dates

Sandhills Livestock Show

January 4-14, 2017

Ft. Worth Livestock Show

- Market Swine- 1/31-2/3
- Market Steers- 1/31-2/3
- Sheep & Goat- 1/27-29
- Heifers- 1/19-23

San Antonio Livestock Show

- Market Swine- 2/18-20(wave 1-Dark)
2/21-23 (wave 2-white)
- Market Steers- 2/20-24
- Sheep & Goat- 2/14-16
- Heifers- 2/14-17
- Poultry- 2/22-23
- Gilt- 2/8-11

San Angelo Livestock Show

- Market Swine- 2/14-16
- Market Steers- 2/6-7
- Sheep & Goat- 2/4-6
- Heifers- 2/9-12
- Gilts- 2/10-12
- Breeding Goats- 2/2-4

Houston Livestock Show

- Market Swine- 3/18-20(wave 1)
3/21-23 (wave 2)
- Market Steers- 3/20-24
- Sheep & Goat- 3/15-17
- Heifers- 3/16-19
- Poultry- 3/15-16
- Gilt- 3/9-10

Rodeo Austin Livestock Show

- Market Swine- 3/20-22
- Market Steers- 3/14-16
- Sheep & Goat- 3/18-19
- Heifers- 3/11-13
- Poultry- 3/18

Brazos County Youth Livestock Show

April 4-8

Contacts

| | | | | |
|--------------------------------|-----------------------------|--|--|---|
| Jerod Meurer 4-H & YD Agent | Dusty Tittle AG/NR Agent | Arvita Scott 4-H & Youth Development CEP Agent | Flora Williams Family & Consumer Sci- ence Agent | Ashley Skinner 4-H Program Assistant |
|--------------------------------|-----------------------------|--|--|---|

Educational programs of the Texas A&M AgriLife Extension Service are open to all people without regard to race, color, religion, sex, national origin, age, disability, genetic information or veteran status.

The Texas A&M University System, U.S. Department of Agriculture, and the County Commissioners Courts of Texas Cooperating