



Brazos County Livestock Newsletter

June 2018 Edition

Inside this issue:

Validation Dates	2
Fall Major Show Entry Night	2
Commercial Heifer Program	2
Reducing Heat Stress	3
Summer Hair Care	4
Sheep & Goat Selection Part II	5
Quality Counts Update	6
Austin Broiler Show Update	7
Importance of weighing feed	8
Stock Show Updates	9
Stock Show Judges	9
Show Dates	10

Special points of interest:

Major Show updates
Major Show Dates
Major Show Judges
Commercial Heifer Show dates
Managing Heat Stress
Growing Healthy Summer Hair
Sheep & Goat Selection part II
Austin Broiler Update
Importance of weighing feed
Validation Dates
Poultry Order Dates

State Fair Sheep, Goat & Swine Validation

This year we will validate all State Fair animals at once at the same location.

- Date- June 22nd
- Time- 7:30am-8:30am
- Location—Pearce Pavilion

Packets will be ready to pick up the week prior to validation. If you have a conflict with this date please contact us in writing prior to the 22nd in order for the validation committee to make considerations for getting your projects validated.

Steer & Heifer Validation

This year there will be 2 steer and heifer validations conducted, you must attend one of the two validations for your animals to get validated.

If you are unable to attend one of these dates you must submit, in writing, a request to the validation committee and they will decide on how to proceed.

- Validation 1- June 16th at the Bryan Sale Barn from 7:30-9am steers followed by heifers. Heifers need to be at the sale barn by 8:30am
- Validation 2- June 25th at TAMU Beef Center from 5:30-6:30pm steers followed by heifers. Heifers need to be there by 6pm.

Validation Packets will be ready to pick up the week prior to validation. If you have a conflict with this date please contact us in writing prior to the 22nd in order for the validation committee to make considerations for getting your projects validated.

Major Show & BCYLS Turkey Orders

It is time once again to order your turkeys for the 2019 major shows and BCYLS.

These turkeys will be eligible for all the major shows as well as BCYLS.

Orders are due by August 7th to the Extension office by 5PM

Order forms can be found at this link:

<http://brazos.agrilife.org/publications/4h-publications/>

If you have any questions, please contact us at 979-823-0129

State Fair Broiler Orders

State Fair Broiler orders are due to the Extension office by June 1st at 5pm.

You must order in groups of 25 and a max of 75 birds

You can order as a family or as an individual.

Order forms can be found at this link:

<http://brazos.agrilife.org/publications/4h-publications/>

If you have any questions, please contact us at 979-823-0129

2018-2019 Brazos County Validation Dates & Tag Orders

Steers

Major Show & County Validation- June 16th at Auction Barn from 7:30-9am/ June 25th at TAMU Beef Center from 5:30-6:30
County Only Steer tag orders due September 11th- tags will be \$5 per tag
County Only Steer Validation will be October TBA (same as Commercial Steers)

Heifers

Summer Heifer Validation will be Validation- June 16th at Auction Barn from 7:30-9am/ June 25th at TAMU Beef Center from 5:30-6:30
Fall Heifer Validation tag orders due September 11th- tags will be \$20
Fall Heifer Validation will be October 30th at the Brazos County Extension office
BCYLS Heifer Entries will be February TBA

Sheep & Goat

State Fair Sheep & Goat Validation will be June 22nd at Pearce Pavilion from 7-9am
Major Show & County tag orders will be August 15th- tags will be \$20 per tag
Major Show & County Validation will be October 29th at Expo from 5:30-7pm

Swine

State Fair Swine Validation will be June 22nd at Pearce Pavilion from 7-9am
Major Show & County tag orders will be September 20th- tags will be \$20 per tag for major and \$5 for county only
Major Show Validation will be November 19th at Expo from 5:30-7pm
County Only Validation will be December 10th at Expo from 5:30-7pm

Broilers

State Fair Broiler Orders are due June 1st
Major Show Broiler Orders due September 11th
BCYLS Broiler Orders- TBA

Turkeys

Major Show Turkey Orders due August 7th

4-H Major Show Entry Nights- State Fair & HOT- August 2nd/ Spring Major Shows- November 1st

All tag order forms can be found on the Brazos County Extension Website:

<https://brazos.agrilife.org/publications/4h-publications/>

Fall Major Show Entry Night

The Fall stock show season is just around the corner so it's time to enter the State Fair of Texas, Heart of Texas Fair and Rodeo, & the West Texas State Fair.

Entry night will be held at the Brazos County Extension office on **August 2, 2018 from 4-6PM**. We will be at the office all day to allow for families to come in during the day to register as well to help speed up the process.

All forms will be available that night to be filled out to enter these shows. If you have a conflict with this date please make arrangements with me to get entered in these shows.

Brazos County Commercial Heifer Show & Sale

IMPORTANT DATES:

TAG-IN: 8 am, Saturday, April 21st

PALPATION: 5 pm, Thursday, October 11th

HEIFER ARRIVAL / CHECK-IN: 5 pm, Thursday, October 25th

JUDGING RESULTS and AWARDS: 5 pm, Friday, October 26th

EXHIBITOR INTERVIEWS: Saturday, October 27th

AUCTION: 6 pm, Saturday, October 27th (meal @ 5:00)



Summer is right around the corner, and with summer comes heat and humidity. No matter the hours of work and preparation you've put into your livestock projects, heat stress is a challenge to plan for and manage.

While we typically think about heat stress in extreme temperatures, the reality is that anytime the temperature exceeds 70 degrees livestock are adversely affected. Heat stress causes increased respiration rate, suppressed appetite, fatigue and dehydration, all signs of a lowered immune response. When we think about these traits and the way they impact production, it becomes very evident that the strenuous expectations we put on our show livestock to perform at the highest level and look exceptional while doing so clearly becomes a challenge.

As managers, it is imperative that we follow best practices and implement some simple, but important steps to ensure fewer setbacks due to heat stress and in turn, experience greater success with our show livestock projects.

First, **take a proactive approach**, and don't just react to the temperature changes. Watch the weather, and make wise decisions. It is a lot harder to bring down livestock's body temperature once they are hot than it is to manage it before it rises.

Next, **manage your facility**, and make sure it is comfortable for your animals. Be sure your animals can get out of direct sunlight into a shaded setting. [Managing air flow and temperature](#) is very important. Whether your facility at home has fans, misters, or even an elaborate cooler, controlling airflow is crucial. If you can provide an environment that minimizes exposure to the direct sunlight and allows for air to move through, even in the most extreme heat, you can drastically reduce the outside temperature. Keeping bedding down and misting water in the air will also help cool the air that fans push through your facility.

As the temperature rises, **consider modifying your feeding program to accommodate cooler periods**. Just like humans, livestock don't want to eat when it is extremely hot. Feed earlier in the mornings so they have a chance to eat and be moved into the barn before it gets hot. Also pay attention to the location of their water supply. Smaller troughs provide more water flow and result in cooler water. Make sure lines that serve as water sources are not exposed to heat resulting in the water in the lines to get extremely hot.

Rinsing animals with cool water multiple times a day will help drop their core temperature better than anything else you do. When rinsing, focus on cooling their underline and head as it will help cool them faster. Don't just get them wet but allow cool water to run over them a while to help drop their body temperature.

It doesn't take long for livestock to feel the impact of heat stress when they are removed from the comforts of a temperature-controlled environment. It is essential to think about this prior to leaving for a show. For cattle that have been kept in a cooler it is very important to raise the temperature of the cooler a week to 10 days ahead, every day slowly increasing the thermostat to help them acclimate. Taking them straight from a cooler to a hot show will cause extreme stress which will ruin your opportunity for success.

BioZyme Inc., maker of Sure Champ®, has developed supplements to help your animals regulate their body temperatures, naturally. It's newest product, [Sure Champ Extreme with Climate Control](#) is a daily top-dress supplement that is formulated for cattle, hogs, sheep and goats and designed to help eliminate heat stress in the animals due to increased temperatures, high humidity or extreme shifts in temperatures or climate. In addition to Amaferm, a natural prebiotic that helps maximize the nutritional value of feed, it contains plant extracts that support the animal's ability to maintain normal body temperatures. Extreme also contains garlic, a natural insect repellent. [Sure Champ Climate Control Paste](#) was introduced in 2017, and helps all show livestock species handle heat stress by lowering the animal's body temperature in a safe, fast and natural way. We suggest starting the paste a week to 10 days before a show and keeping livestock on the paste through the show to keep them more relaxed, cool and comfortable, resulting in better appetite and higher energy levels allowing them to look their best on show day

Strategically plan when you haul to shows. **During hot periods of the year hauling at night is the most ideal** to help reduce the time they will be exposed to the heat of a trailer. Make sure you have adjusted ventilation on trailer to allow for adequate air flow while traveling. Most importantly once you arrive to the show it's critical to **maintain the same schedule of caring for your stock**. Continue to feed early and maintain body temperature by keeping animals rinsed regularly and under fans. It's easy to get excited to see your friends and lose focus on your projects, but lots of preparation and time have been put into your animals so it's critical to continue your same routine at the show that you have done at home. Heat stress can be a challenge at shows but can also be turned into an advantage for those who prepare properly. Stay positive, stay cool and prep to win!



With Spring-like temperatures sweeping across much of the country, it is time to make sure you are already working with your show cattle to get rid of their winter hair coat, and make sure that a new healthy hair coat is growing and will be ready for late spring and summer shows.

Exhibitors should get rid of the old winter coat and be prepared to start the process of promoting new hair growth 100-120 days prior to the show that is the animal's end-point or targeted show, whether that is a state fair, county fair or breed junior nationals. There are two basic alternatives to ridding your calf of the old, dead hair.

First, and perhaps the more common method is to shear your animal. Clip your calf in a downward direction or with the grain of its hair using a plucking blade or beveled comb or blade. Typically this is done starting on their topline and in a downward stroke all the way to their bellyline. At that point begin blending to leave hair from the bottom of their quarter down their hindleg, on their underline and from their forearm down on their front leg. In many geographic regions, this might already be done, and is many times started around the first of March but most will have clipped their calf slick by the end of April, depending on their show season.

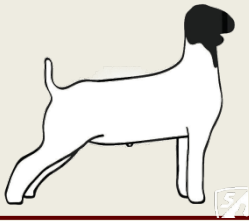
The second option is to use a shedding devise like a shedding comb or brush. This is a more time consuming method, but helps ensure that the new, healthy hair that is starting its growth isn't lost. Remember the earlier you can get the old dead winter hair removed the faster you can get new growth started.

Once you are rid of the old growth, you need to promote growing a new, healthy hair coat that will be show ring ready. Rinsing animals at least daily and using a conditioner will encourage hair growth and keep their hair and skin healthy. Washing your animal with soap twice a week is ideal to keep its hide clean. The best way to dry your animal while initially starting the hair growing process is to brush them dry with a rice root brush or clean, plastic wash brush while being tied with their head up in front of fans. Blow drying isn't necessary when their hair is so short. Once they are dry applying a sheen or light oil and working it in with a brush/comb and a blower will help restore oils that are stripped from the hair when being rinsed, and provide for healthy hide and hair.

The next step in growing a healthy hair coat is to make sure you are following a good nutrition program. Make sure your animals are getting a good vitamin or mineral supplement like Sure Champ®, which does help promote the skin and hair quality of your animals. Many livestock exhibitors also offer melatonin in their feed, which also helps the hair grow.

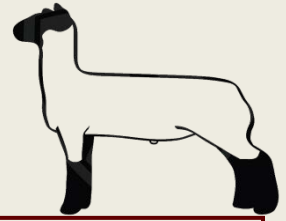
Finally, remember hair growth is all related to the mind and body working together with the animal's mind thinking it is preparing its body for winter. With longer, brighter days in the spring and summer, it is important to keep your animals safely tied into a darker, cooler area so their minds will trigger their body to grow hair. Make sure your cattle get tied into coolers or under fans early in the morning before the sun is bright. Then, the cattle should be turned out after dark when the temperatures are cooling off.

Get rid of that winter hair coat. Rinse. Condition. Brush. Feed Sure Champ. Grow healthy hair.



Sheep and Goat Projects:

Part II



Now that you have decided on how much you would like to spend, where you would like to purchase your next project, and covered some of the basics to look for when selecting your project. We will cover some of the feeding and facility basics to get you started on the right path with your new project.

These are a few items you need to consider before you head out to purchase the project.

- Make sure you have a bag of feed ready for when you get your animal home
- Have a clean pen, free of weeds and grass, fresh water, and some sort of building to allow them to get out of the weather or find shade from the heat.
- Insure that there are no holes in your fence, and that it is tall enough to keep predators and dogs out

Facilities

Sheep & goats need a combination arrangement, access to a shed and an area where they can get outside in the sunshine. The shed area should be at least 20 square feet of space for each animal. The outside pen needs to be as large as possible for the animals to get plenty of exercise. The shed should be well drained where water does not accumulate under the barn. Sheds or barns should be open to the east or south. Barn temperature is critical, the structure should be well ventilated so the animals will remain cool and continue to grow during the summer months. On the other hand both sheep and goats will be slick shorn for all the shows, so the barns need to be altered during the winter to keep the animals as warm as possible. The fence height should be at least 42 inches tall to keep animals from attempting to jump out and keep predators or dogs out.

Feeding

Self feeders are used in the early stages of feeding both sheep and goats, they should be blocked up at least 8 inches off the ground. After a few weeks you may want to move to hand feeding your projects. The movable hanging feeders work best for this since you can move the feeder to the correct height as the animals grow. It is best to take these feeders down every 2-3 weeks and clean them out. Also it is important to provide the sheep and goats with hay and minerals. These feeders need to be raised off the ground as well.

Clean water is the most important ingredient in feeding any livestock project. Water troughs should be small enough that they can be drained and cleaned on a weekly basis. Remember that water troughs should be checked on a daily basis and should be located in the shade so the water stays cool.

When you are out looking at projects you want to get some information from the owner as to what vaccinations it has had and when it was wormed last so you know what and when it needs its next set. Do not hesitate to ask questions about the animals bloodlines, and the age of the projects you are looking at. Also it is essential that when you purchase your project that it is treated for internal parasites and overeating disease. Many younger goats and range raised sheep don't know how to eat so it is important that they have access to good, leafy alfalfa hay that is top dressed on their feed to encourage them to eat it.



Sheep & Goat Projects Continued



If this is your first year and you are starting from scratch you may need a few of these items listed below to assist with your project.

- Stiff brush to clean water troughs
- Drench Gun
- Muzzles
- Goat blankets/or socks
- Water bucket
- Box to hold all equipment
- Halters, collars, and/or show chains
- Portable hanging feeder
- Spray Bottle
- Hoof Trimmers
- Soft brush to groom your project

If you have any questions or would like us to assist you in locating and purchasing your next project, please contact us as soon as possible so we can have adequate time to help locate projects that meet your requirements.

Also make sure to keep the tag order, validation, and major show entry dates updated so you don't miss any of them.

- Sheep & Goat tag orders are due to the Extension office by August 19th
- Sheep & Goat Validation will be October 17th at the Brazos Expo Complex from 5:30-7:30
- Major Show entry night will be November 3rd at the Brazos County Extension office from 5-7

If you have any questions or concerns about any of these projects, please contact your county agent or ag teacher for further assistance.

NEW QUALITY COUNTS TRAINING!

- > New content and videos from industry experts, 4-H/FFA personnel and major livestock show representatives
- > Course release date will be **August 2018**
- > Completely self-paced

All livestock exhibitors are required to be re-verified on the new system for Spring major shows entries. Exhibitors will NOT have to be re-verified for 2018 State Fair of Texas entries.

Questions?

Email Dottie Goebel at dottie.goebel@ag.tamu.edu



Major Show Chicken Show Changes



DEPARTMENT OF POULTRY SCIENCE

MEMORANDUM

Date: May 7, 2018

To: All County Extension Agents and Ag Science Teachers/FFA advisors

From: Dr. Craig Coufal
Associate Department Head for Extension
Texas A&M AgriLife Extension Service
Department of Poultry Science

Subject: Broiler orders for 2019 Rodeo Austin Youth Market Livestock Show

This memo is to inform all county agents, ag science teachers, FFA advisors, Rodeo Austin Junior Market Livestock Show exhibitors and parents/guardians of exhibitors that there will be a change for ordering broilers for the 2019 Rodeo Austin Youth Market Livestock Show. Changes to show dates will result in the Austin show being held 2 weeks after the Houston show in March of 2019. Therefore, it is necessary that a separate hatch of chicks be reared for the Austin show. In the past, exhibitors could enter broilers from the same hatch of chicks at both the Houston and Austin shows. In 2019, this will NOT be allowed. Exhibitors who wish to participate in the Rodeo Austin market broiler show will need to purchase a separate set of chicks through the Texas A&M AgriLife Extension Poultry Science office.

We are providing this information to you now so that exhibitors and their parents and advisors can begin planning their 2019 orders for the three major livestock shows in the spring of 2019. The San Antonio, Houston and Austin youth market poultry shows will each be 2 weeks apart, thus requiring a separate order of chicks for each show. San Antonio will be Form 1, Houston will be Form 2, and Austin will be Form 3. Rules for ordering and order forms will be posted on the Texas A&M AgriLife Extension Poultry Science website on Friday, August 31, 2018. All orders must be postmarked by Monday, October 15, 2018.

No other changes to ordering rules or procedures are anticipated. The price of chicks for all three shows will remain \$1.50 per chick with a minimum order of 25 chicks per individual exhibitor or family. The dates for chick pick up in the spring of 2019 will be announced in November, 2018. However, exhibitors can expect to receive chicks approximately 6 weeks before each show date as this will allow the birds to be the proper age at show time.

Kieberg Animal and Food Science Center
Room 101
2472 TAMU
College Station, TX 77843-2472

Tel. 979.845.1931
Fax. 979.845.1921
<http://posc.tamu.edu>



The Importance of Weighing Your Feed

You've probably heard it a time or two, but doing the simple things right is the fastest way to reach your goal. A lot of decisions go into what you are going to feed your show animals. So, when you dump that bucket of feed into the pan or trough morning and night, you want to make sure your animals are getting exactly the right amount.

One of the best investments you can make for your barn or feed room is a simple fishing scale. This allows you to weigh each bucket and measure out the correct amount of feed. The reason why we encourage people to stay away from the coffee can or feed scoop method is:

1. Your coffee can or feed scoop might not be the same size as your friends'. When you are consulting back with the breeder of your animal, and you tell him or her you are feeding a scoop of this or two scoops of that, that isn't giving an accurate picture of what you are feeding.

2. Different grains and supplements weigh different amounts even though the volume might be the same. For example, a scoop of oats vs. a scoop of corn vs. a scoop of cottonseed hulls will be very different weights.

Weighing your feed every day also keeps you consistent. It is easy for you to start to eyeball what you think 15 lbs. looks like, then realize you have only been feeding 13 or 14 lbs. once you weigh your bucket. By taking the extra step to weigh your feed, you'll ensure your show animals are on the right track for success.

2018 Major Show Updates

State Fair of Texas

Gilts- September 27th-September 30th

Market Goats- September 28th- September 29th

Market Lambs- September 28th- September 30th

Market Steers- October 1st- October 4th

Market Swine- Wave 1 October 1st-October 2nd Wave 2- October 3rd- October 4th

Sale of Champions- Friday October 5th

Heifers (Beefmaster, Brangus, Red Brangus, Gerts, Simbrah, Simmental, Star 5 & ARB)- October 10th- 14th

Heifers (Angus, Char, Chi, Hereford, Limi, Maine, Polled Hereford, Red Angus, Shorthorn, ORB)- October 17th -21st

For a more detailed schedule please visit the following website: <https://bigtex.com/livestock/livestockshow/>

Market steer show will add a black cross division to their show

2018 HOT Fair Updates

The 2018 HOT Fair has a new schedule for livestock so please take a few minutes to look over it and make note of the changes. The biggest change is all heifers will show on the same weekend and steers will be on a separate weekend. Sheep and Goat days have changed to end over the weekend.

More details can be found at the following link: <https://www.hotfair.com/events/2017/livestock-show>

State Fair of Texas

Market Steers- Dan Hoge
Prospect Steers- Nick Fitzsimmons
Market Goats- Brandon Morgan
Market Sheep- Brian Riley
Market Swine- Bryan Arnold
Market Poultry- Keith Scott

San Angelo Livestock Show

Market Steers-TBA
Market Goats- Dr. Mark Hoge
Market Sheep- Dr. Clay Burson
Market Swine- TBA
Heifers- TBA

HOT Fair

Jr. Heifers- American- PJ Budler
Jackpot Heifers – American- Brad Bennett
Jr. Heifer-British/Continental- Brad Bennett
Jackpot Heifer-British/Continental- Chase Runyan
Jr. Steers – Brady Jensen
Jackpot Steers- Chad Coburn
Jr. Goat- Chad Coburn
Jackpot Goat- Denton Lowe
Jr. Sheep – Denton Lowe
Jackpot Sheep- Keaton Dodd
Jr Swine- Mike Fisher
Jackpot Swine- Brady Ragland

San Antonio Livestock Show

Market Steers- Dr. Dan Shike Ast. Judge- Graham Blagg
Market Goats- Dr. Bryan Bernhard
Market Sheep- Terry Burks
Market Swine- Dr. Mark Hoge & Miles Toenyes

Rodeo Austin

Market Steers- Blake Nelson
Market Goats- Cody Sloan
Market Lambs- Jake Thorne
Market Swine- TBD

Houston

Market Steers-Kevin Jensen
Market Marvin Ensor
Market Sheep- Todd Wise
Market Kade Hummel & James Backman
Heifers- TBA
Poultry- TBA

Ft. Worth Livestock Show

Market Steers-Chris Mullinix
Market Goats- Kurt Henry
Market Sheep- Steve Sturtz
Market Swine- Ben Moyer
Heifers- Matt Leo, Jim Bloomberg, & Jirl Buck

**Brazos County
Extension Office**

2619 Highway 21 West
Bryan, Texas 77803

Phone: 979-823-0129
Fax: 979-775-3768
E-mail:

Brazos@ag.tamu.edu

Wer'e on the Web!

<http://brazos.agrilife.org/>

Upcoming Events:

Tag order Deadline:

State Fair Broilers-
June 1st

Validation Dates:
State Fair Sheep, Goats, &
Swine- June 22nd

Steers- June 16th & June 25th

Heifers- June 16th & June 25th

Entry Nights:

State Fair & HOT entry day-
August 2nd

Show Dates

State Fair of Texas

- Gilts- 9/27-9/30
- Mkt Swine- 10/1-10/4
- Mkt Goat -9/28-9/29
- Mkt Sheep-9/28-9/30
- Mkt Steers-10/1-10/4
- Boilers-10/1
- Heifers

Heart of Texas Fair

- Heifers – 10/4-10/7
- Steers- 10/11-10/13
- Sheep 10/11-10/13
- Goats 10/11-10/13
- Swine 10/9-10/10

Brazos Valley Fair

October 19-21

Sandhills

TBA

Ft. Worth

- Steers- 2/5-2/9
- Mkt Swine- 2/5-2/9
- Mkt Sheep- 1/24-1/28
- Mkt Goat- 1/24-1/28
- Heifers- TBA

San Antonio

February 7-24, 2019

San Angelo

- Steers- 2/12-2/13
- Mkt Swine- 2/12-2/14
- Mkt Sheep- 2/1-2/4
- Mkt Goat- 2/1-2/3
- Heifers- 2/7-2/10
- Gilts- 2/8-2/10
- Breeding Does- 2/1-2/2

Rodeo Austin

- Steers- 3/25-3/27
- Mkt Swine- 3/22-3/24
- Mkt Sheep- 3/18-3/19
- Mkt Goat- 3/18-3/19
- Heifers- 3/28-3/30
- Poultry- 3/20

Houston

- Steers- 3/11-3/16
- Mkt Swine- 3/9-3/15
- Mkt Sheep- 3/5-3/8
- Mkt Goat- 3/5-3/8
- Heifers- 3/6-3/9
- Poultry- 3/7-3/9

BCYLS

March 19-23

Contacts

Jerod Meurer 4-H & YD Agent	Dusty Tittle AG/NR Agent	Arvita Scott 4-H & Youth Development CEP Agent	Flora Williams Family & Consumer Science Agent	Ashley Skinner 4-H Program Assistant
--------------------------------	-----------------------------	--	--	---

Educational programs of the Texas A&M AgriLife Extension Service are open to all people without regard to race, color, religion, sex, national origin, age, disability, genetic information or veteran status.

The Texas A&M University System, U.S. Department of Agriculture, and the County Commissioners Courts of Texas Cooperating